

Scraped Surface Heat Exchanger RT

RT648 AND RT672



Scraped Surface Heat Exchanger RT

FIELD OF APPLICATION

Dairy, food and other industries. The units are designed to heat, sterilise and cool a wide range of products containing particles up to 38 mm or products with high viscosity.

OTHER APPLICATIONS

Crystallisation, thixotropic products, thermo sensible products, whipping applications etc.

MODELS

RT648 and RT672 with 1 cylinder. Groups of cylinders can be mounted on a common framework. Dasher size \varnothing 76, 115 or 140 mm.

CAPACITY

Up to about 10,000 l/h, depending on product, temperature, specific demands and number of cylinders.

STANDARD DESIGN

The unit is supported by saddles made of stainless steel.

IT CONSISTS OF

- One cylinder made of SAF2205-EN.i.4462 Duplex steel. Heat exchange surface 0.55 or 0.84 m². The cylinder is provided with jacket for steam, thermo-oil, water or glucol.
- Dasher \varnothing 115 mm made of stainless steel, AISI 316, with scraper blades of plastic.
- Door made of stainless steel, AISI 316, with \varnothing 63.5 mm radial connection for DIN, DS, ISO, SMS, BS or clamp fittings.
- Standard mechanical rotary seal (carbon/hard metal)
- Gear motor drive with coupling.

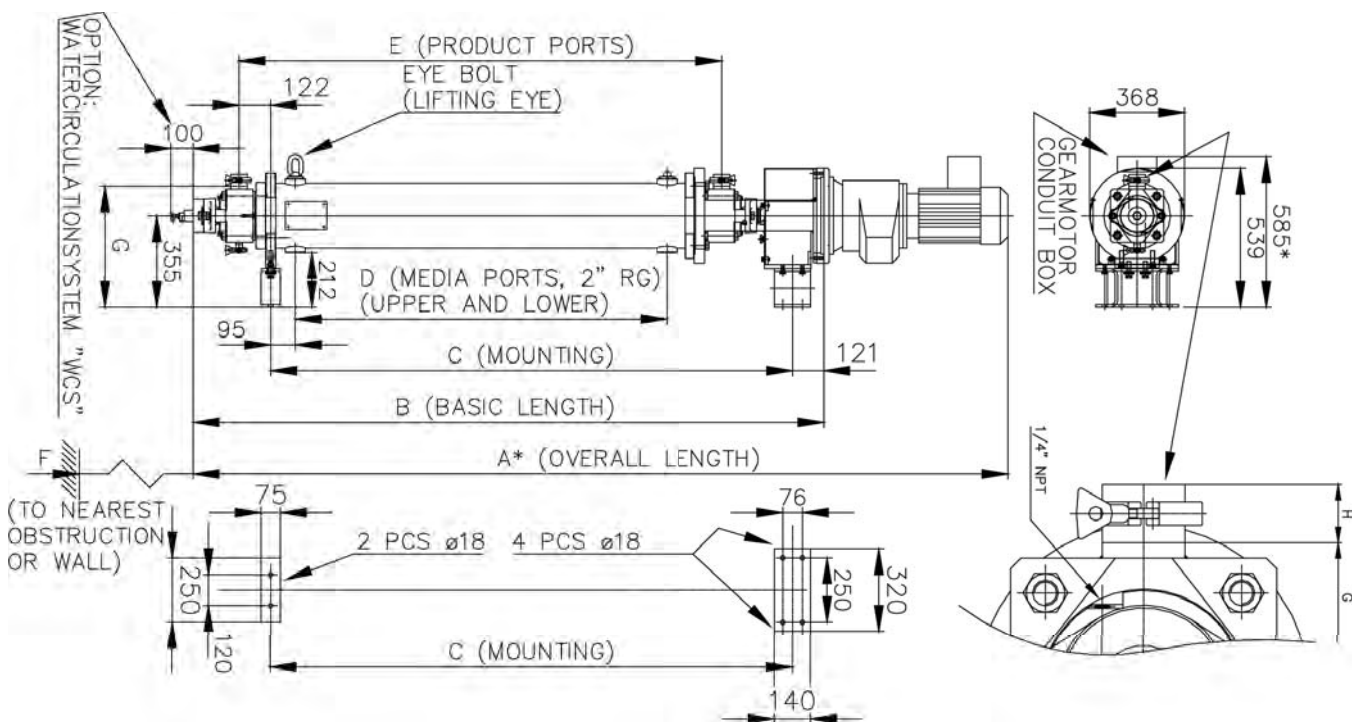
ALTERNATIVES AND OPTIONAL EXTRAS

- Cylinders made of SAF2507-EN.1.4410 Super Duplex steel.
- Cylinders made of bimetal with metal scraper blades.
- Cylinders made of hard-chromed nickel with metal scraper blades.
- Abrasive resistant seal.
- Aseptic seal.
- Water circulated dasher.
- \varnothing 138 mm dasher.

DRIVES

KW	RPM MAX RANGE
3.0	140/160
5.5	140/350
7.5	140/350
11.0	150/350
15.0	150/350
18.5	180/305
22.5	180/305

MOTORS 3 X 380/660 V, 50HZ, IP54.



CONNECTIONS		H
DS Ø63.5	MM	49
ISO Ø63.5	MM	59
DIN NW65	MM	65
SMS Ø63.5	MM	56
BS Ø63.5	MM	64
CLAMP Ø63.5	MM	45



SCRAPED SURFACE HEAT EXCHANGER TYPE HD

MODEL		A	B	C	D	E	F	G
1 HRT648	MM	2484	1771	1447 ± 1,5	829	1258	1803	470
1 HRT672	MM	3093	2380	2026 ±1,5	1438	1867	2413	470

* THIS DIMENSION DEPENDS ON THE TYPE AND SIZE OF DRIVE UNIT
THIS DRAWING SHOWS A 11 KW FLANGE MOUNTED EURODRIVE
GEARMOTOR



SCRAPED SURFACE EXCHANGER TYPE HEXHD

TECHNICAL DATA	MODEL RT 648	MODEL RT 672
HEAT EXCHANGER SURFACE/CYL.	0.55 M ²	0.84 M ²
CYLINDER DIAMETER DASHER DIAMETER - ALTERNATIVE	150 MM Ø115 MM Ø138 MM	150 MM Ø115 MM Ø138 MM
PRODUCT: MAX. PRESSURE MODULE A Ø115 MODULE A Ø138 MODULE A1 IN-OUTLET CONNECTION NET VOL./CYL Ø115 MM DASHER Ø138 MM DASHER MAX. VISCOSITY	181 BAR 28,5 BAR Ø63.5 MM 11 L 7 L 500.000 CP	125 BAR 18,1 BAR Ø63.5 MM 16 L 12 L 500.000 CP
MEDIA: MAX. PRESSURE RECOMMEDED FLOW IN-OULET CONNECTION	8 BAR 15-20.000 I/H Ø 2" BSP	8 BAR 15-20.000 I/H Ø 2" BSP
MAX. MOTOR EFFECT/TYL.	22 KW	22 KW



Scraped Surface Heat Exchanger Type RT648 and RT672

ABOUT SPX

Based in Charlotte, North Carolina, SPX Corporation (NYSE: SPW) is a global Fortune 500 multi-industry manufacturing leader. For more information, please visit www.spx.com.

SPX FLOW TECHNOLOGY

Pasteursvej,
DK-8600 Silkeborg, Denmark
P: +45 70 278 278
F: +45 70 278 330

SPX reserves the right to incorporate our latest design and material changes without notice or obligation.

Design features, materials of construction and dimensional data, as described in this bulletin, are provided for your information only and should not be relied upon unless confirmed in writing. Please contact your local sales representative for product availability in your region. For more information visit www.spx.com.

The green ">" is a trademark of SPX Corporation, Inc..

APV-1170-GB Version: 02/12 Issued: 12/2012

COPYRIGHT © 2004, 2009, 2012 SPX Corporation